



BreezeACCESS[®] EZ

A Breakthrough Offer for Wireless ISPs

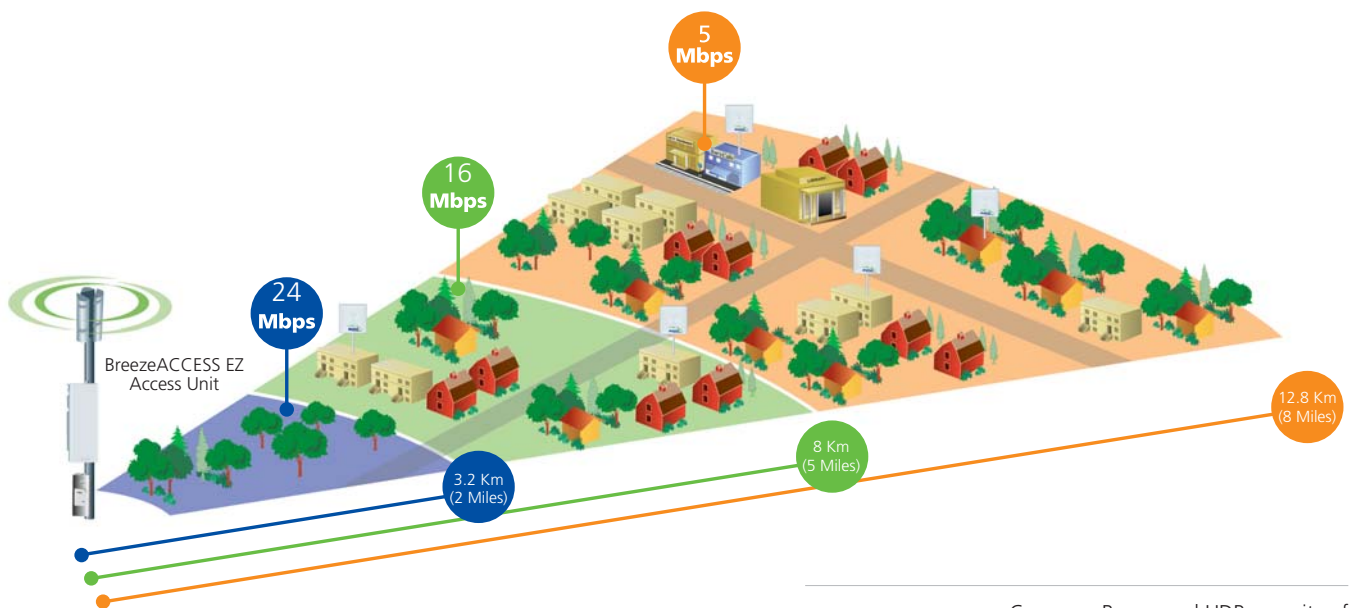
In a dynamic and demanding market, maintaining a competitive position is essential for customer acquisition as well as customer retention. Whether to expand existing networks or penetrate new markets, Wireless Internet Service Providers (WISPs) are continuously looking for cost-effective network solutions. Alvarion's BreezeACCESS EZ presents the ideal solution, offering a breakthrough value to WISPs seeking affordability, without sacrificing robustness and performance.



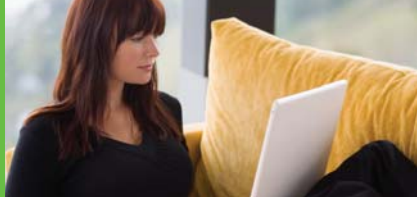


Packaged for premium value, BreezeACCESS EZ offers a wide range of capabilities and benefits:

- Capacity of up to 24 Mbps per Access Unit (AU-EZ), and throughput of up to 12 Mbps per Subscriber Unit (SU-EZ), enable the delivery of powerful broadband services to more subscribers
- A range of over 12 Km (Up to 8 Miles), extends broadband anywhere and everywhere
- Cost effective and reliable solution secures improved business case and rapid return on investment
- Rapid and simplified deployment via non-line-of-sight (NLOS) technology, integral alignment navigation and intuitive Web-based management
- Instant network expansion with out-of-the-box solution and local available stock
- Cross-geographical solution with configurable bands and country codes
- Operational in license-exempt bands and optimized for residential services
- Hardware based encryption enables secured wireless links without sacrificing throughput



Coverage Range and UDP capacity of BreezeACCESS EZ ACCESS under FCC regulations



Powerful and Reliable

Part of Alvarion's extended and field-proven product portfolio, BreezeACCESS EZ is an integral part of the BreezeACCESS family and one of the most widely deployed broadband wireless access systems in the world. With capacity of up to 24 Mbps per access unit, the EZ solution enables the delivery of powerful broadband services to more subscribers.

Extended Range at an Affordable Price

With a range of over 12 Km and lower equipment and deployment costs, BreezeACCESS EZ enables service providers to wirelessly extend their services to customers who were previously unable to afford them, while securing rapid ROI. Remote residential areas can now benefit from high-speed Internet access, Web browsing and email, and advanced applications such as multi-media services.

Quick and Simple Network Expansion

An out-of-the-box solution with immediate available local stock, BreezeACCESS EZ enables virtually instant network expansion and simplified deployment.

Communities Empowered by Broadband

Alvarion has always taken an active role in encouraging community satisfaction. BreezeACCESS EZ presents a step forward in overcoming the digital divide by providing an affordable solution that offers vast opportunities for enhanced communication, education, business, social development and improved quality of life.



SU-EZ outdoor unit

System Components

Alvarion's BreezeACCESS EZ solution consists of a central Access Unit (AU-EZ) serving access to multiple Subscriber Units (SU-EZ).

AU-EZ

Serving up to 24 Mbps of Internet access, an AU-EZ consists of a network interface/power supply indoor unit (IDU) and an outdoor radio unit with an interface for an external antenna. The modular design of AU-EZ enables flexibility in sectoring a covered area by using different external antennas. The following variety of antennas is available for the AU-EZ: 360, 120, 90 and 60 degrees.



SU-EZ

Each SU-EZ, connected wirelessly to an AU-EZ, provides an efficient platform for continuous broadband access. It consists of an outdoor wireless radio with integrated high performance 17 dBi flat panel antenna, and the same IDU as the AU-EZ for power supply and network interface.



The SU-EZ, designed for fast installation and configuration, includes complete mounting bracket, visual antenna alignment navigation and intuitive web-based user interface.

Headquarters

International Corporate Headquarters
Tel: +972.3.645.6262
Email: corporate-sales@alvarion.com

North America Headquarters
Tel: +1.650.314.2500
Email: n.america-sales@alvarion.com

Sales Contacts

Australia
Email: australia-sales@alvarion.com

Brazil
Email: brazil-sales@alvarion.com

Canada
Email: canada-sales@alvarion.com

Caribbean
Email: caribbean-sales@alvarion.com

China
Email: china-sales@alvarion.com

Czech Republic
Email: czech-sales@alvarion.com

France
Email: france-sales@alvarion.com

Germany
Email: germany-sales@alvarion.com

Hong Kong
Email: hongkong-sales@alvarion.com

Italy
Email: italy-sales@alvarion.com

Ireland
Email: uk-sales@alvarion.com

Japan
Email: japan-sales@alvarion.com

Latin America
Email: lasales@alvarion.com

Mexico
Email: mexico-sales@alvarion.com

Nigeria
Email: nigeria-sales@alvarion.com

Philippines
Email: far.east-sales@alvarion.com

Poland
Email: poland-sales@alvarion.com

Romania
Email: romania-sales@alvarion.com

Russia
Email: info@alvarion.ru

Singapore
Email: far.east-sales@alvarion.com

South Africa
Email: africa-sales@alvarion.com

Spain
Email: spain-sales@alvarion.com

U.K.
Email: uk-sales@alvarion.com

Uruguay
Email: uruguay-sales@alvarion.com

For the latest contact information in your area, please visit:
www.alvarion.com/company/locations

Specifications

Radio and Modem

Frequency	4.900-5.875 GHz multi-band with automatic band and frequency detection in SU-EZ	
Media Access	Time Division Duplex (TDD)	
Channel Bandwidth	20 MHz	
Radio Technology	Orthogonal Frequency Division Multiplexing (OFDM)	
	Subscriber Unit EZ	Access Unit EZ
Max Throughput/Capacity	12 Mbps full duplex	23 Mbps aggregated capacity
Max Tx. Power @ Antenna Port	18dBm	21dBm
Antenna	Integrated Flat Panel Antenna, 17dBi, 24°AZ x 18°EL	Choice of Detached Antennas: <ul style="list-style-type: none"> • 16dBi, 60°AZ x 10°EL • 17dBi, 90°AZ x 6°EL • 15dBi, 120°AZ x 6°EL • Omni 8dBi, 360°AZ x 4.5°EL * *Not available for 5.4/5.3 FCC
Sensitivity Range	From -86dBm @ 6Mbps to -68dBm @ 54 Mbps	From -89dBm @ 6Mbps to -71dBm @ 54 Mbps

Configuration and Management

Management Options	SU-EZ: Web-Based, Telnet, SSH, SNMP AU-EZ: Telnet, SNMP	
Management Access	Local via Ethernet Port or remotely over the Wireless Link	
IP Address Assignment	Automatic (DHCP Client), Manual	
Configuration File	Upload/Download via FTP/TFTP	
Software Upgrade	Download via FTP/TFTP with Backup Image File of running version for safe operation	Download via FTP/TFTP with Dual Image File allowing downgrade to previous version
Security	WEP 152, SSL 0.95A, SSH v2	WEP 152

Mechanical, Electrical and Environmental

	SU-EZ Outdoor Unit	AU-EZ Outdoor Unit	Indoor Unit
Size	195 x 190 x 74 mm	305 x 117 x 57 mm	140 x 66 x 35 mm
Weight	1.47 kg	1.8 kg	0.3 kg
Power	Typical: 10W Max: 40W	Typical: 12W Max: 25W	AC In: 85-265 VAC, 50-60 Hz DC Out: 55 VDC, 1 A max
Operating Temperature	-33°C to 60°C	-40°C to 55°C	0°C to 40°C
Operating Humidity	5% to 95%, non-condensing. Ingress Protection for Outdoor Units: IP67		

Standards Compliance

Safety	UL/CUL (CSA60950-1, UL60950-1, UL-50) CE/CB (EN60950 include IPX4 /IEC 60950-1)
Radio	ETSI 301 893, 301 489 (DC power), FCC Part 15E 15.407
EMC	CE Class B (EN55022, EN55024) FCC Class B Part 15
Hazardous Substances	RoHS Compliant

About Alvarion

With more than 3 million units deployed in more than 150 countries, Alvarion is the worldwide leader for WiMAX and wireless broadband solutions, providing systems for connectivity and backhauling to carriers, ISPs and private network operators. With over a decade of technology standards leadership and the industry's most extensive product portfolio covering the full range of frequency bands, the company is the world's largest pure play provider of wireless broadband networking infrastructure for last mile communications markets.



www.alvarion.com

© Copyright 2007 Alvarion Ltd. All rights reserved.
Alvarion® and all names, product and service names referenced here in are either registered trademarks, trademarks, tradenames or service marks of Alvarion Ltd. All other names are or may be the trademarks of their respective owners. The content herein is subject to change without further notice.